

5.31 M for 100. for a distance
 for 693. M to curb on S. side 5th
 St to eleva (56.89 ft.
 56.798) 545.45

57.95
 56.89
 1.06

Feb 29 - 1884

Survey of Part of Lot - 1 Block 4
 5 acres plat - "A" Ogden City, Sar

Req. 2²² Rods South from the N.E.
 cor of said lot and run thence
 S 5 Rods W. 11 Rods N. 7 Rods E.
 3 Rods S 2 Rods E 8 Rods to
 place of beg. cont. 61 rods of land.

531.30
 15.93

66.84

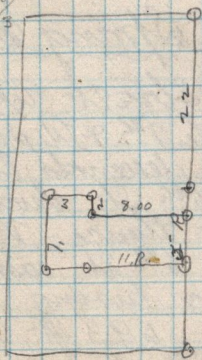
2006
 15.93
 25.99
 54.41
 28.4

5.31
 26.55
 63.14
 36.59

86.798
 20.00
 66.798

25.99
 54.41
 1.50
 31.57
 54.57
 23.27

6.93
 5.01
 6.93
 20.793
 34.86
 33.6798
 29.275
 14.171



41.4
 27.3
 1.4

1806
 19.16
 1.10

6.93
 5.31
 6.93
 20.793
 34.86
 33.6798
 29.275

1806
 5.60
 23.66
 5.60
 2.9